

Carrier-Mounted Hydraulic Crane Specifications



32 ft. to 80 ft. (9.8m-24.4m) three section Trapezoidal full power boom. Telescoping is mechanically synchronized with single lever control. Telescopic sections slide on adjustable and replaceable Nylatron wear pads.

Maximum Tip Height: 85 ft. (25.9m).

30 ft. (9.3m) lattice swingaway boom extension stows alongside base boom section when not in use, offsettable at 0°, 15° or 30°.

Maximum Tip Height: 114 ft. (34.7m).

30 ft. to 54 ft. (9.1m-16.5m) telescopic lattice swingaway extension with offset links, offsettable at 0°, 15° or 30°. Stows alongside base boom when not in use.

Maximum Tip Height: 137 ft. (41.8m).

Five steel sheaves mounted on heavy duty tapered roller bearings with removable pin-type rope guards.

*Optional removable auxiliary boom nose with removable pin type rope guard.

One double acting hydraulic cylinder with integral holding valve provides elevation from -4° to 75°.

Standard load moment and anti-two block system with audio-visual warning and control lever lockout. These systems provide electronic display of boom angle, length, radius, tip height, relative load moment, maximum permissible load, load indication and warning of impending two-block condition.

Full vision, all steel fabricated with acoustical lining and tinted safety glass throughout. Dash panel incorporates gauges for all engine functions. Other standard features include: hinged skylight, sliding left side door and sliding right side window, electric windshield wash/wipe, circulating air fan, heater, swing horn, fire extinguisher, seat belt. *Optional items: electric skylight wiper and air conditioning.

Roller bearing swing circle with 360° continuous rotation. Grove planetary "glide-swing" with foot actuated disc brake, spring applied hydraulically released park brake and 360° position positive turntable lock. Combination controls provided for hand or foot operation. Swing speed 3.6 RPM.

HYDRAULIC SYSTEM

Pumps One, 3-section gear pump driven PTO with manual pump disconnect capacity 112.5 GPM (426 LPM).

Valves Precision four way double acting individual valve banks permit simultaneous multiple crane functions.

Filter Suction line type, full flow with by filter by-pass indicator, replaceable micron filtration rating.

Reservoir 86 gallons (326 L) with spin-on breather, external sight gauge, clean out access to frame.

Oil Cooler Full flow, fin and tube, oil to air.

HOIST SPECIFICATIONS

Power up and down, equal speed, with integral automatic brake and drum rotation indicator.

		Grove Main Hoist
		*Aux. Hoist I
Make/Model		Main
Maximum single line speed	Bottom layer	298 FPM (91m/min)
	Intermediate layer	352 FPM (107m/min)
	Top layer	379 FPM (116m/min)
Maximum single line pull	Bottom layer	8,496 lbs. (3854 kg)
	Intermediate layer	7,194 lbs. (3263 kg)
	Top layer	6,681 lbs. (3031 kg)
Maximum permissible line pull		8,496 lbs. (3854 kg)
w/5:1 strength factor		5/8 in. (16mm) 18x19 class w
Maximum rope stowage		450 ft. of 5/8" dia. rope (137m of 16mm)
		Note: 450 ft. (137m) length of wire rope s

High strength alloy steel all welded box-type construction with integral outrigger housings and front/rear lifting, towing and tie down lugs.

Hydraulic single stage double box telescopic beam and jack outriggers with integral holding valves. All steel fabricated quick release type outrigger floats 24 in. (610mm) diameter. Maximum outrigger pad load 55,213 lbs. (25,044 kg). Standard fifth front stabilizer for 360° duties.

Located in the superstructure cab. Push button controls requiring two-handed operation. Crane level indicator (sight bubble) adjacent to controls.

6CTA8.3 Cummins six cylinder turbocharged water cooled diesel. 210 hp (157 kw) (Gross) @ 2400 RPM. Maximum net torque 605 ft. lbs. (84 kg/m) @ 1300 RPM.

(1) 60 gallons (227 L)

Four 12-volt - maintenance free batteries, 24 volt starting.

6 x 4

Front axle steering, rack and pinion design with hydraulic assist.

Manual with 13 speeds forward, 3 reverse.

Front: 1 steer, beam type

Rear: 2 & 3 drive axles with inter-axle differential locks.

Front axle (1) spring mounted. Rear axles (2) solid mount tandem with equalizing beam and solid steel saddles.

Front: 425/65R22.5

Rear: 9.00x20-12PR

Optional Rear: 10.00x20-12PR

Full air on all wheels. Air dryer provided to preclude moisture accumulation. Spring set emergency brake on both rear axles with emergency release.

Full lighting including head, tail, braking, reversing, fog, directional and hazard warning lights.

Cab

One man design, all steel fabricated lining and tinted safety glass through covered fully adjustable seat. Compl controls and engine instrumentation tachometer, speedometer, voltmeter pressure, fuel level, air pressure ga warning. Other standard items inclu heater/defroster, electric windshield extinguisher, seat belt and door and

Maximum Speed 52 MPH (83.7 kph)

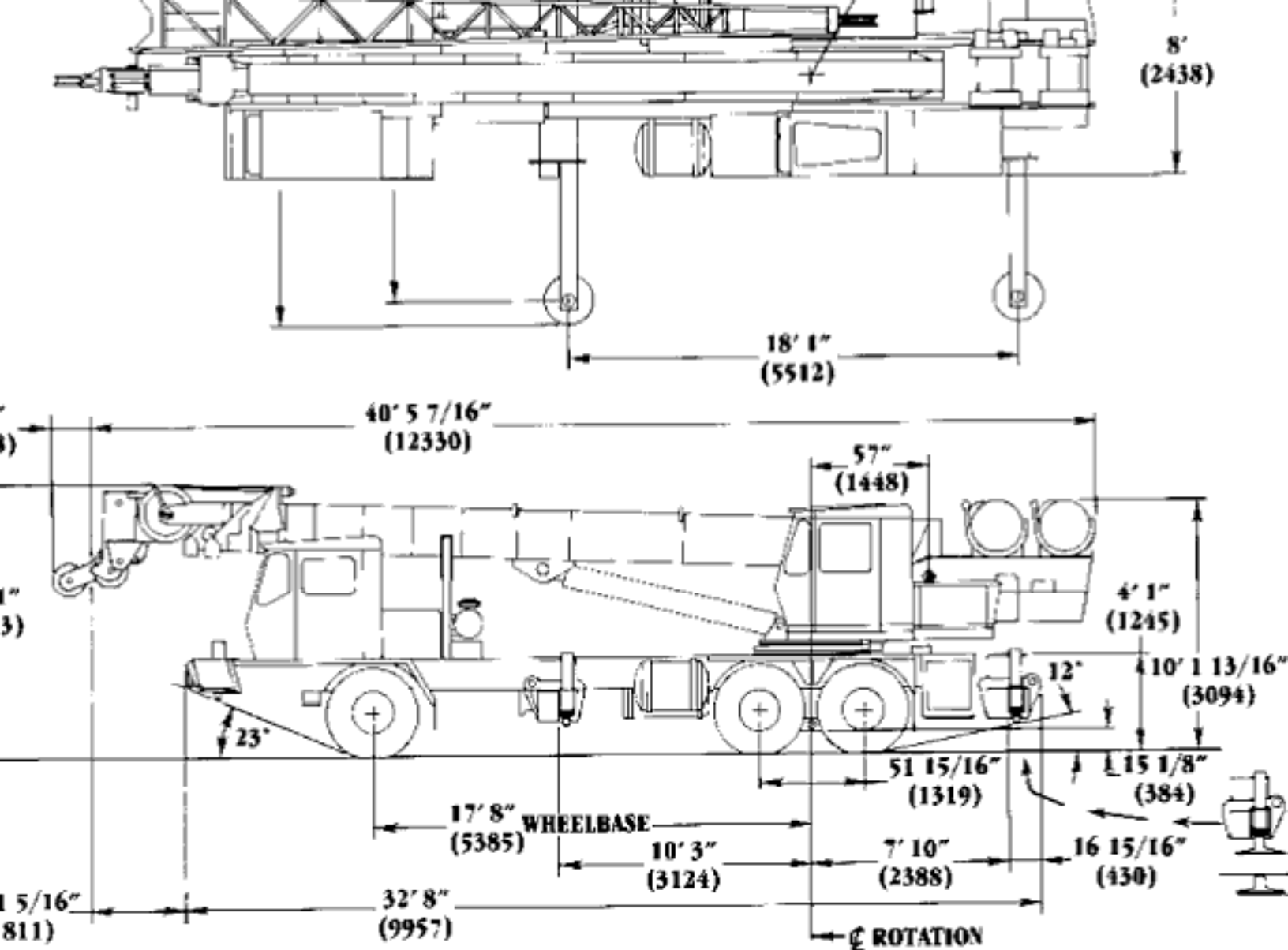
BASIC STANDARD MACHINE

Gross Vehicle Weight & Axle Loads
Front: 16,762 lbs. (7,600 kg)
Rear Tandem: 33,982 lbs. (15,410 kg)
G.V.W.: 50,744 lbs. (23,010 kg)

Miscellaneous Standard Equipment Dual rear view mirrors, hookblock electronic back-up alarm, air clean indicator, fuel/water separator and aid. Sling box.

Optional Equipment Immersion engine block heater, engine pressure/high water temperature au and tire inflation kit.

*Denotes optional



Constant improvement and innovation in progress. We, if necessary, may alter specifications and equipment without prior charge or without notice. Illustrations of equipment and accessories and may not include all standard equipment.

Worldwide - World Headquarters
 Main Trail East
 Pennsylvania 17256
 (717) 597-8121 Telex: 1812308 Fax: (717) 597-1062
 America
 Shady Grove, Pennsylvania 17256

Distributed By: